

# MONEY FOR SCHOOL!!

GRANT MONEY FOR  
VOLUNTEER FIREFIGHTERS  
THROUGH THE NAPA COUNTY  
FIREFIGHTERS ASSOCIATION  
STRIVE GRANT.

USE TOWARDS ANY TYPE OF  
DEGREE-NOT JUST FIREFIGHTING.

BECOME AN EMT OR PARAMEDIC

-OR-

GET SPONSORED TO TAKE  
THE SRJC STATE FIREFIGHTER I  
ACADEMY IN SANTA ROSA, CA  
AND SAVE MONEY-AND NO WAIT  
TO WIN A SPOT IN.



# TRAINING SCHEDULE

2ND AND 3RD SATURDAYS

VARIOUS MANDATORY AND  
VOLUNTARY CLASSES ALL YEAR  
LONG TO ADVANCE FROM  
FIREFIGHTER LEVEL UP TO  
OFFICER.

# NCFD VOLUNTEER ACADEMY

JANUARY-MAY

WHERE TO APPLY

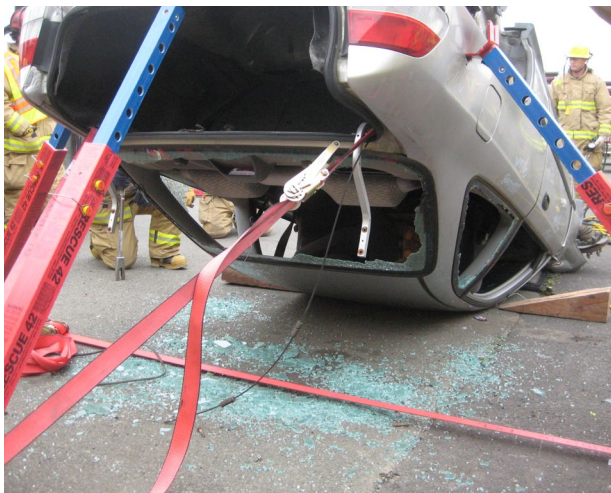


NAPA COUNTY FIRE DEPT.  
DRY CREEK-LOKOYA  
STATION 16  
5900 DRY CREEK ROAD  
NAPA, CA 94558

[www.drycreek.org](http://www.drycreek.org)  
[training16@drycreek.org](mailto:training16@drycreek.org)

# Want to be a Firefighter?





**AS A FIREFIGHTER  
YOU'LL RESPOND TO:**

**MEDICAL AID**

**PUBLIC ASSIST**

**VEHICLE ACCIDENTS**

**STRUCTURE FIRES**

**WILDLAND FIRES**

**RESCUES**

**HAZ MAT RESPONSE**



SERVE AND BE ABLE TO GIVE BACK TO THE CITIZENS OF NAPA COUNTY, AND CALIFORNIA.

VISIT [WWW.DRYCREEK.ORG](http://WWW.DRYCREEK.ORG) NOW TO LEARN REQUIREMENTS TO BE A FIREFIGHTER AND HOW TO APPLY OR SCHEDULE A VISIT.



**D**EDICATION  
**C**OMMITMENT  
**L**OYALTY

THE DRY CREEK-LOKOYA VOLUNTEER FIRE DEPARTMENT COVERS 200 SQUARE MILES ON THE WESTERN HILLS OF THE NAPA VALLEY.

OUR RESPONSE AREA IS VAST SO OUR ENGINES ARE STATIONED IN STRATEGIC LOCATIONS TO OPTIMIZE OUR RESPONSE TIMES IN EMERGENCY SITUATIONS.

A TYPE I ENGINE IS STATIONED AT THE MAIN HOUSE, A TYPE III (WILDLAND TYPE FIRE ENGINE) ON DRY CREEK RD, AND A PATROL UNIT EQUIPPED WITH A MINI PUMPER ON MT. VEEDER NEAR LOKOYA.

WE ALSO MUTUALLY RESPOND ON A REGULAR BASIS TO ASSIST TWO OTHER VFDs IN SOUTH COUNTY; BUT CAN GO ALL OVER NAPA COUNTY OR CALIFORNIA IN LARGER EMERGENCIES.

